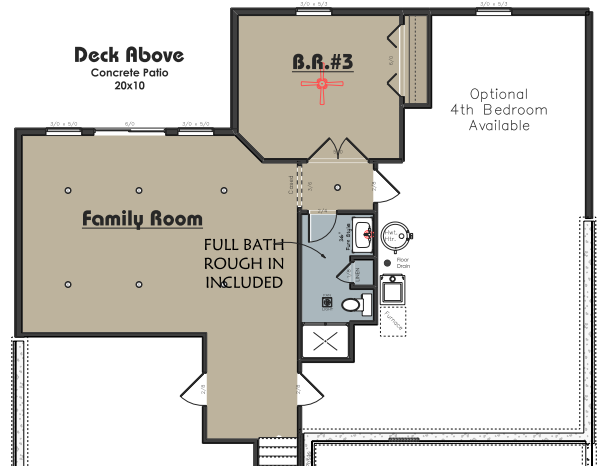
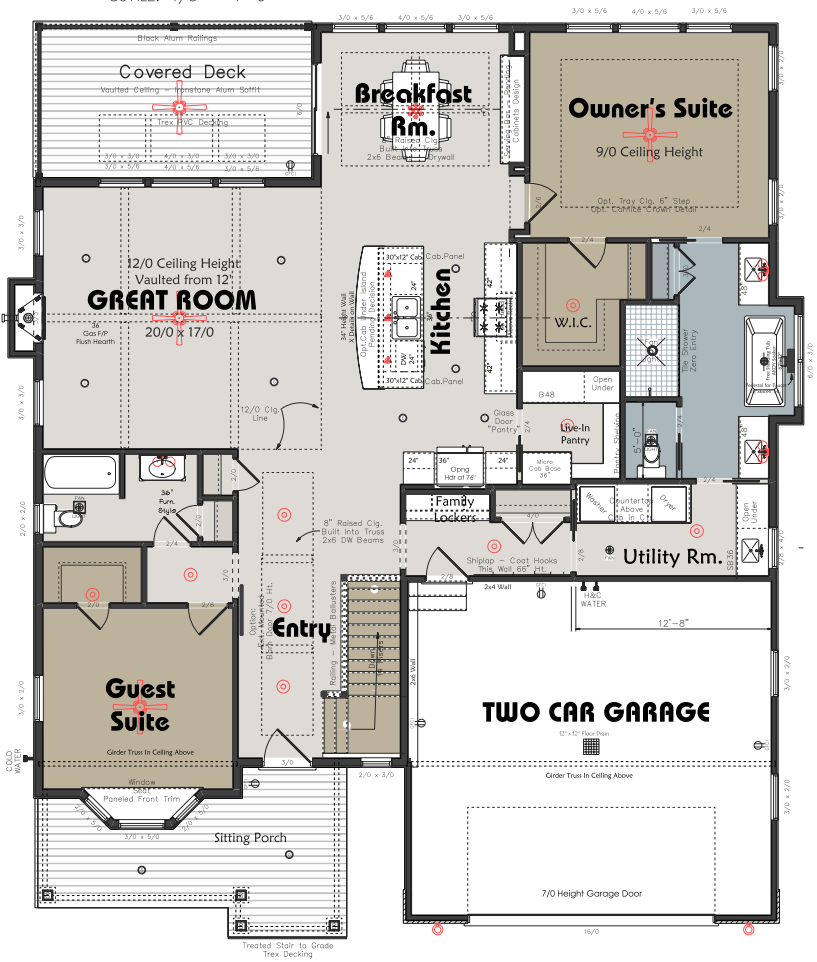




**FRONT ELEVATION**

SCALE: 1/8" = 1'-0"



**AREA DATA**

1894	Main Floor
750	Garden Level
Garden Level Finish is Optional Not Included	
<b>2644</b>	<b>Total Living Area</b>
515	Garage
151	Front Cov Porch
176	Rear Cov Porch

**Landmark Homes - Model Home**  
 City of Brunswick -  
 3165 Blossom Trail Drive  
 Brunswick, OH  
 COPYRIGHT Wednesday, November 2, 2022



**Sales Brochure**  
 Sales Brochure is Representational  
 Not Part of any Contract Documents  
 Some Colors/Options/Details may have Changed  
 Consult your Sales Representative for its Built Details  
 landmarkhomesmedina.com  
 330-571-8100  
 SALES@LANDMARKHOMES.BIZ

Drawings, Designs, Concepts, and Information contained herein are the exclusive property of Tim R Pelton. They are to be used for Construction only at the site indicated. Unauthorized use alteration or reproduction of the documents and design ideas or concepts is prohibited without written permission!